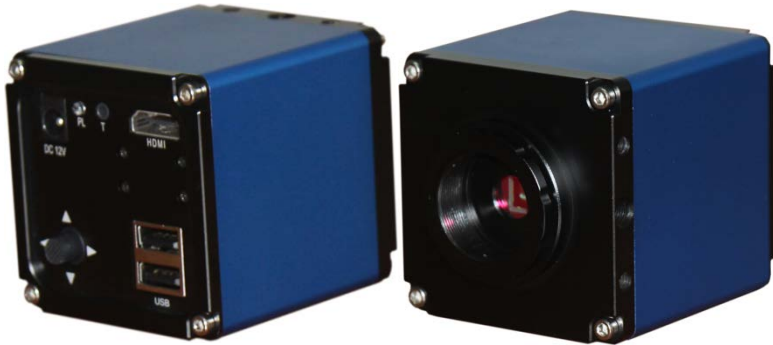


26100-253 HD

Full HD High-Speed U-Disk Storage High-End Industrial Camera

Instructions

- HDMI-200VN-U Appearance



Setting the Camera

1. Connect camera to a display with a high quality HDMI cable.
Due to the high resolution, the display screen size must be at least 22 inches to reach 1920 *1080p.
2. Plug in the 12 v/2A dc power supply.

3. **Color correction** (Auto White Balance):

Use a piece of white paper as a target in the focus area of the camera lens.

Push the navigation button to move menu cursor to the item “P”.

Press the button vertically and right push again. The icon “WB” will become white.

This means the white balance is working automatically and compensates for the lighting.

4. **Auto Exposure:** The icon “AE” will become white when selected.

The unit adjusts exposure automatically and compensates for the lighting.



NOTICE: In order to obtain the best image effect, the brightness (or exposure) value will generally be under 90.

Intensity Contrast

This function can be used for observing lower contrast samples. Generally, it is recommended they be set at zero.

Using the Navigation Button




- *Pushing the navigation button upward or downward (or, if you're standing in front of it, forward or backward) will select the main function, or move the cursor up or down.
- *Pushing to the left or right will move among sub-functions or initiate them.
- *The center button is used for making and executing assignments, and to move the item in and out of range.

●Display adjustment

main menu	Sub-function	operating	illustrate
P (Automatic Image Correction)	AE (Automatic exposure correction)	Push right to correct.	AE----Auto Exposure. At this time, you will need to adjust the light intensity of illumination, and redo the AE process. Turn the light up or down to maximize or minimize illumination.
	WB (Automatic	Push left to correct.	WB----White Balance.

	white balance correction)		
HDR (High dynamic response)	★☆☆ I (1) ★★☆ II (2) ★★★ III(3) ☆☆☆ N(0)	Push right to switch.	HDR---High dynamic response HDR divided into four levels: ☆☆☆ N(0) : closed for normal use 。 ★★☆ I (1): level 1 ★★☆ II (2): level 2 ★★★ III(3): level 3
SE (sharpen edges)	I (1) II (2) III(3)	push right switching	SE---Sharpen Edges SE is divided into four levels: N(0) : closed for normal use。 I (1): level 1 II (2): level 2 III(3): level 3

Manual Image Adjustment Effect

 red	pointer and numerical	Left click to reduce, right click to increase	RED adjustment: adjustable range of 0-100.
 green	pointer and numerical	Left click to reduce, right click to increase	GREEN adjustment: adjustable range of 0-99.
 Blue	pointer and numerical	Left click to reduce, right click to increase	BLUE adjustment: adjustable range of 0-99.

✗ luminance	pointer and numerical	Left click to reduce, right click to increase	Luminance adjustment: adjustable range of 0-99. Suggestion: For the best image effects, the number should be less than 90.
✗ High contrast	Pointer and numerical normal: 0	Left click to reduce, right click to increase	High contrast adjustment : adjustable range: 0-10。 Low contrast objects use only. Generally recommended to set at 0.

Calibration line operation

For superposition of single cross line or four lengthwise four horizontal lines, click middle button onto item

Left click(←) or right click(→) for more choices



To restore factory settings, left-click and hold.

⊕ : Line of mobile.



Choose this icon for Line Number: 

Choose this icon to make color choices: 

The color of line number  will become green.

Press the middle button to select that line, or move arrows up or down to make a different choice.

Two small arrow symbols will appear on both sides of the icon



Left click or right click to choose the color of the currently selected line. Click upwards or downwards to adjust the line's position.

***Image Preservation and Image Edge Enhancement**

The camera supports the storage of 2000000 BMP format photos. For the trigger mode camera handle, it is necessary to note the file system for the U disk FAT32 format.



SE function for the image edge enhancement mode consists of four levels. When this feature is on, the edges of the image will become clearer.
