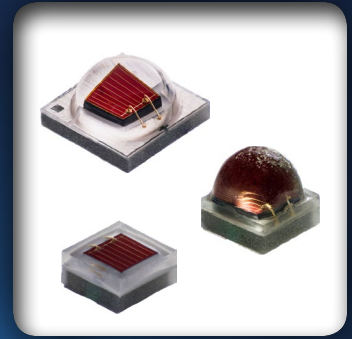


CREE® XLAMP® LED COLOR PORTFOLIO

- Largest Portfolio of LED Color Solutions
- Full Spectrum of Options
- Options for Every Major Colored Light Application
- Common Package Design Across White & Color LEDs
- Many Options for RGB Applications



Cree XLamp LED Product Portfolio - Color

XLamp	Discretés (Directional)					
	XP-E	XP-E2	XB-D	XQ-A	XQ-E HD	XQ-E HI
Footprint (mm)	3.45 X 3.45	3.45 x 3.45	2.45 x 2.45	1.6 x 1.6	1.6 x 1.6	1.6 x 1.6
Colors	Royal Blue Blue Green Amber Red-Orange Red HE Photo Red Far Red	Royal Blue Blue Green PC Amber Amber Red-Orange Red	Royal Blue Blue Green Amber Red-Orange Red	Royal Blue Blue Green PC Amber Red-Orange Red	Royal Blue Blue Green PC Amber Red-Orange Red HE Photo Red	Royal Blue Blue Green PC Amber Red-Orange Red
Value	<ul style="list-style-type: none"> • Optical Control - Put Light Where It Is Needed • Design Flexibility • Common Package Design for Color and White LEDs 					
Applications	<ul style="list-style-type: none"> • Architectural • Entertainment • Emergency Vehicle 			<ul style="list-style-type: none"> • Transportation • Remote Phosphor • Horticultural 		

Flux Ranges

	Royal Blue	Blue	Green	Amber	PC Amber	Red-Orange	Red	HE Photo Red	Far Red
	450-465	465-485	520-535	585-595		610-620	620-630	650-670	720-740
XP-E	350-500	31-40	81-114	46-81		57-87	46-74	350-425	175-250
XP-E2	450-650	31-46	87-122	62-81	87-107	67-107	57-81		
XB-D	450-550	31-40	87-107	57-74		74-100	57-67		
XQ-A	210-250	11-14	31-46		27-35	31-40	24-31		
XQ-E HD	450-600	31-46	94-107		74-81	67-94	57-74	350-375	
XQ-E HI	525-575	31-40	81-107		67-74	62-74	46-57		

Minimum radiant flux (mW) @ binning current, 25 °C

Minimum luminous flux (lm) @ binning current, 25 °C

Minimum radiant flux (mW) @ binning current, 25 °C



Copyright © 2013-2016 Cree, Inc. All rights reserved. This document is provided for informational purposes only and is not a warranty or specification. The information in this document is subject to change without notice. Cree® and XLamp® are registered trademarks and the Cree logo is a trademark of Cree, Inc.

October 2016 (FS05R16)

+1 919-313-5300 • 800-533-2583
xlampsales@cree.com

Applications

Architectural - Color Changing

Entertainment - Stage Studio

Emergency Vehicle

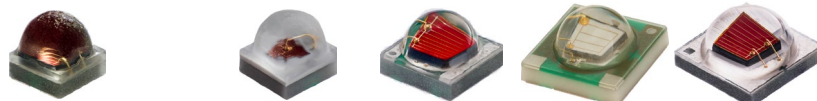
Horticulture

Transportation

Remote Phosphor



Performance Specifications



	XQ-E HI	XQ-E HD	XQ-A	XB-D	XP-E	XP-E2
Footprint (mm)	1.60 x 1.60	1.60 x 1.60	1.60 x 1.60	2.45 x 2.45	3.45 x 3.45	3.45 x 3.45
Binning Current	350 mA	350 mA	175 mA	350 mA	350 mA	350 mA
Maximum Current	1000 mA	1000 mA	250 mA	1000 mA	1000 mA	1000 mA
Thermal Resistance (°C/W), Royal Blue	6	6	17	6.5	9	9
Typical Vf @ Binning Current, Royal Blue	3.1	3.1	3.25	3.1	3.1	3.1
Thermal Resistance (°C/W), Blue	6	6	17	6.5	9	9
Typical Vf @ Binning Current, Blue	3.1	3.1	3.25	3.1	3.1	3.1
Thermal Resistance (°C/W), Green	9	9	30	11	15	15
Typical Vf @ Binning Current, Green	3.2	3.2	3.4	3.3	3.3	3.2
Thermal Resistance (°C/W), Amber	N/A	N/A	N/A	7	10	7
Typical Vf @ Binning Current, Amber	N/A	N/A	N/A	2.25	2.3	2.2
Thermal Resistance (°C/W), PC Amber	8	8	20	N/A	N/A	9
Typical Vf @ Binning Current, PC Amber	3.1	3.1	3.4	N/A	N/A	3.05
Thermal Resistance (°C/W), Red-Orange	5	5	18	5	8	5
Typical Vf @ Binning Current, Red-Orange	2.2	2.2	2.2	2.25	2.1	2.2
Thermal Resistance (°C/W), Red	5	5	18	5	8	5
Typical Vf @ Binning Current, Red	2.2	2.2	2.2	2.25	2.1	2.2
Thermal Resistance (°C/W), HE Photo Red	N/A	5	N/A	N/A	8	N/A
Typical Vf @ Binning Current, HE Photo Red	N/A	2.1	N/A	N/A	2.1	N/A
Thermal Resistance (°C/W), Far Red	N/A	N/A	N/A	N/A	8	N/A
Typical Vf @ Binning Current, Far Red	N/A	N/A	N/A	N/A	1.9	N/A