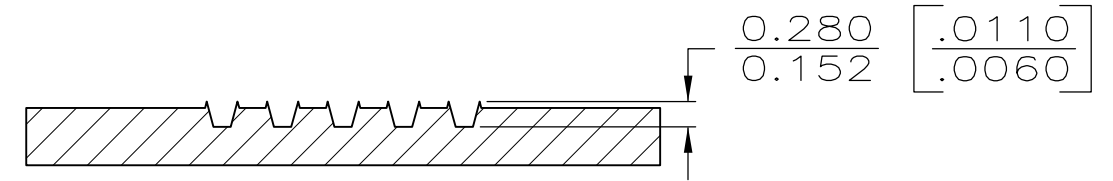
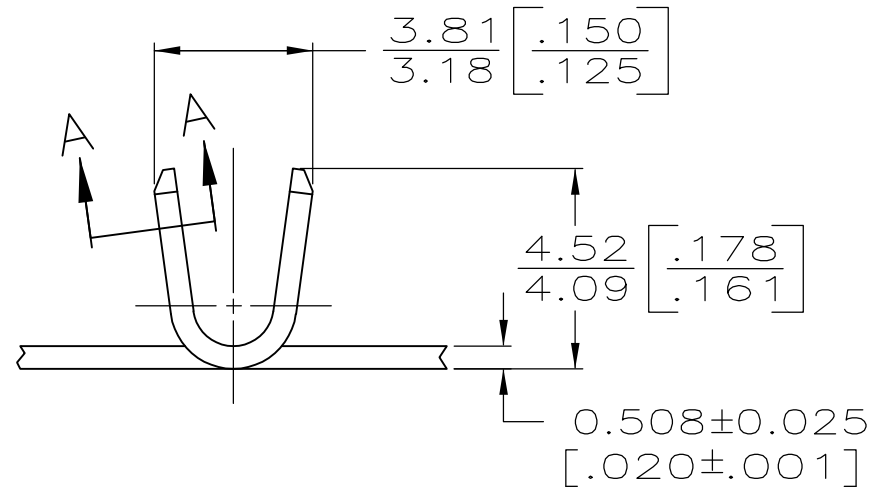
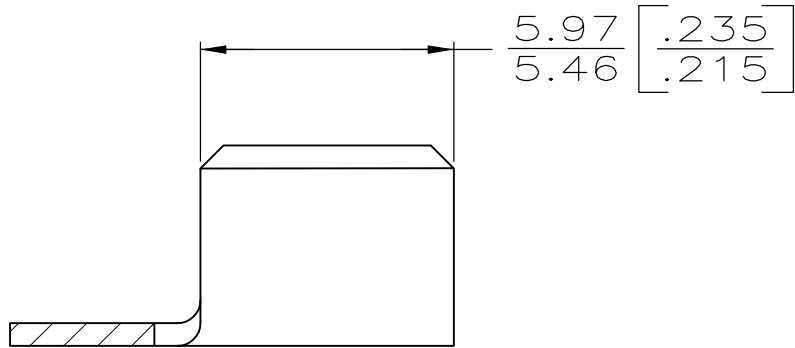
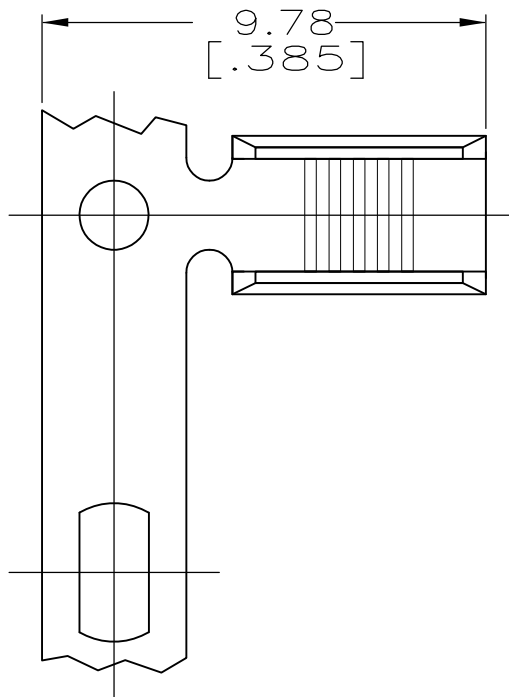


THIS DRAWING IS UNPUBLISHED. RELEASED FOR PUBLICATION
 © COPYRIGHT BY TYCO ELECTRONICS CORPORATION. ALL INTERNATIONAL RIGHTS RESERVED.

LOC	DIST	REVISIONS			
P	LTR	DESCRIPTION	DATE	DWN	APVD
AF	50	C1	REVISED PER ECR-10-001322	23JAN10	HMR GP



SECTION A-A
 SCALE 15:1
 ROTATED

- 1 CONTINUOUS STRIP ON REELS.
- 2 CRIMP WIDTH = .110 F TYPE (AMPLIVAR THRU)
 CRIMP HEIGHT (±.002) = (TOTAL CMA + 11,500) / 194,200
 GENERAL APPLICATION GUIDELINES MUST BE FOLLOWED
 AS SPECIFIED IN CATALOG #82221
 FOR APPLICATOR INFORMATION CALL: 1-800-722-1111
 FOR PRODUCT INFORMATION CALL: 1-800-522-6752
- 3 TIN 112-16-3 0.00203 [.000080] MIN THK

2 2000-5400 CMA	3 63564-3
	63564-1
WIRE RANGE	PART NO

THIS DRAWING IS A CONTROLLED DOCUMENT.		DWN 12/20/89 MICHAEL S. FEHER	Tyco Electronics Corporation Harrisburg, PA 17105-3608	
DIMENSIONS: mm [INCHES]	TOLERANCES UNLESS OTHERWISE SPECIFIED:	CHK 12/21/89 P. FORTNEY	NAME SPLICE, AMPLIVAR, 5 SERRATIONS	
	0 PLC ± -	APVD 1/2/90 T.L. SHUTTER	PRODUCT SPEC	
	1 PLC ± -	PRODUCT SPEC	APPLICATION SPEC	
	2 PLC ± -	114-2009	SIZE	CAGE CODE
	3 PLC ± 0.25 [.010]	WEIGHT -	A3	00779
	4 PLC ± -	CUSTOMER DRAWING	DRAWING NO	C-63564
	ANGLES ± -	SCALE 6:1	SHEET 1 OF 1	REV C1
MATERIAL	FINISH	RESTRICTED TO		
#2 HARD BRASS	-	-		

