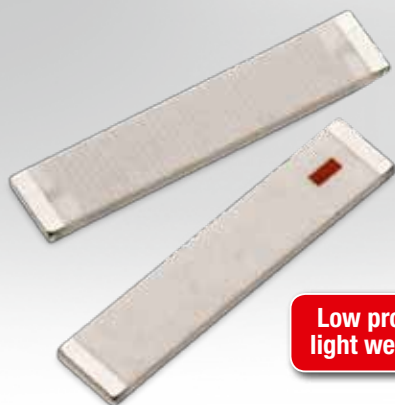


WE-MCA

Multilayer Chip Antenna

433 MHz



Low profile and light weight type

Characteristics

- Low profile
- Low VSWR
- Omnidirectional
- Testboard available

Applications

- Radio remote control
- Roller shutter control
- Garage door opener
- Wireless thermometer
- Wireless measurement systems

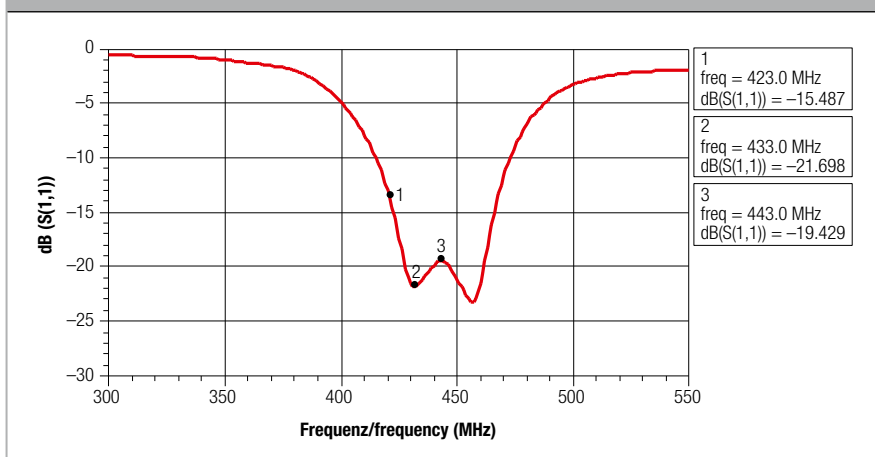
QR-Code



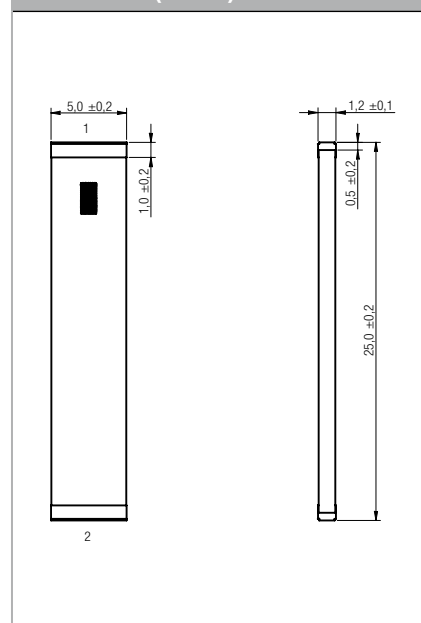
Electrical properties

Order Code	Frequency Range (MHz)	Average Gain typ. (XZ-V) (dBi)	Z (Ω)	VSWR max.	Qty.
748 891 004 3	423-443	-4.0	50	2	500

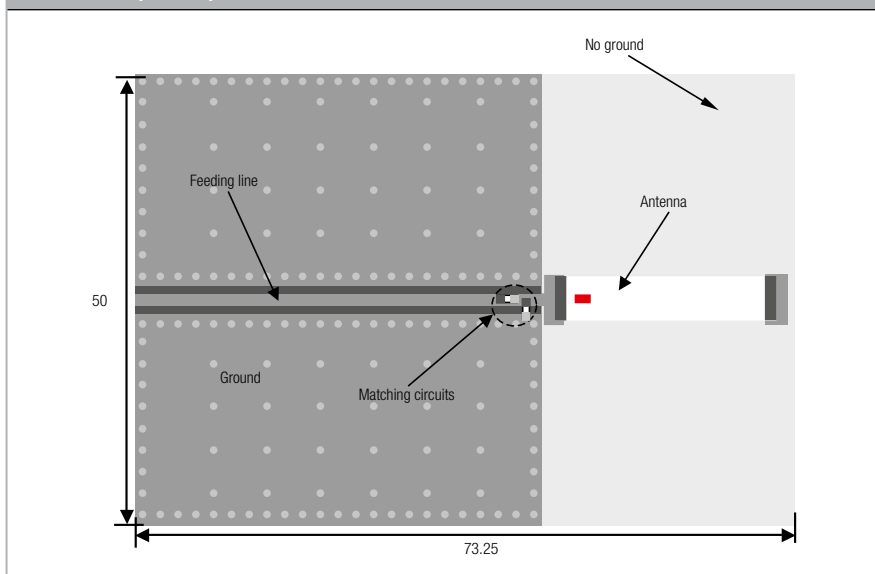
Return loss



Dimensions (in mm)



Test board (in mm)



Land pattern (in mm)

