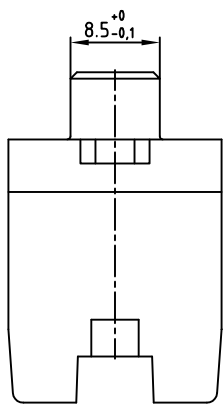
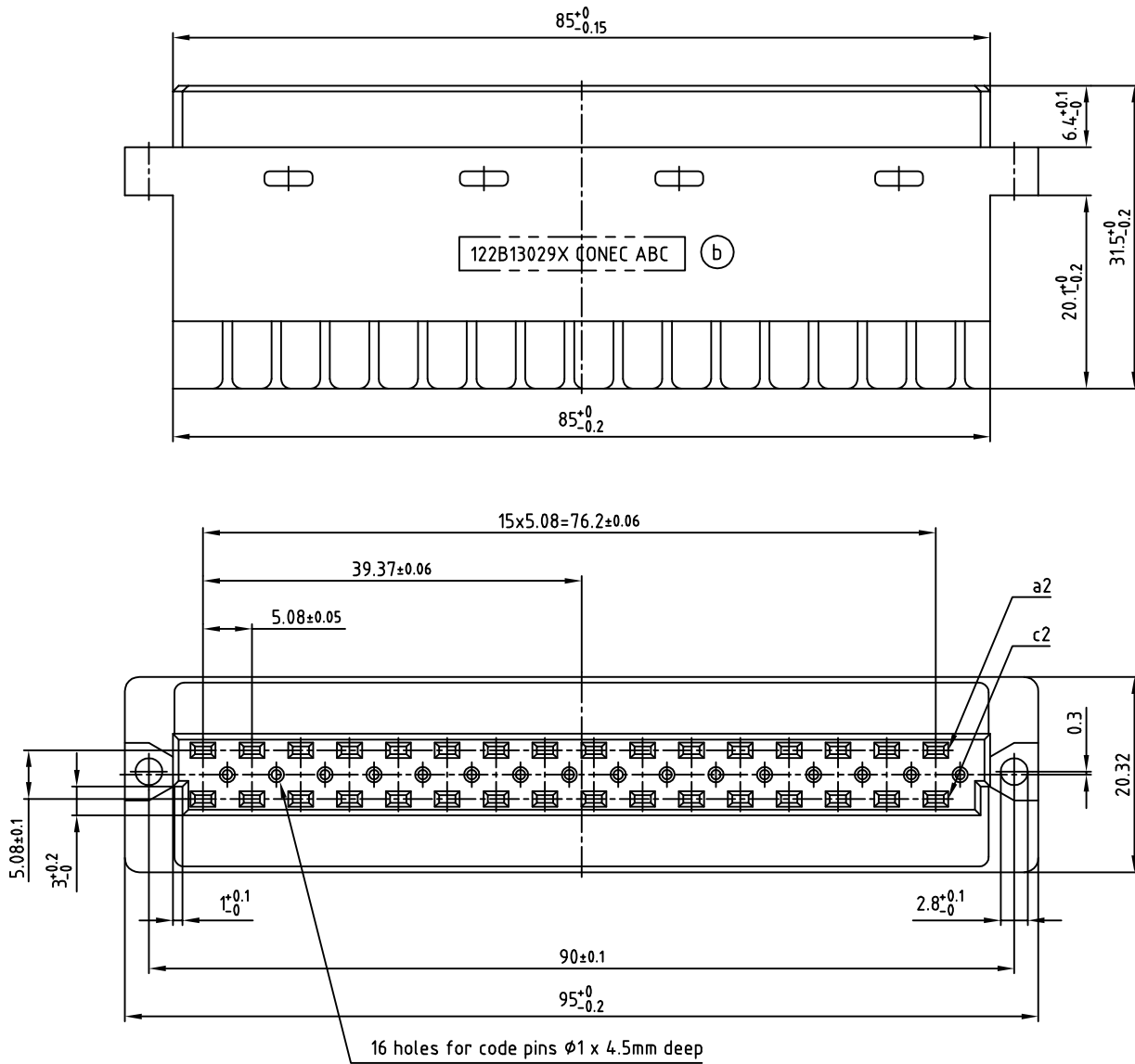


used for: DIN EN 60603-2 TYPE "D"



### Technical Data

Conductor size: AWG 24...16  
 Rated current: 6A  
 Rated voltage: 300/250 V~  
 Moulding material: PBT GF grey  
 Operating temperature: -55°C to +120°C  
 Flammability: UL 94 V-0  
 Contact material: CuSn 6  
 Contact finish: Au over Ni  
 Screw connection: steel

Directive 2002/95/EC RoHS compliant

THIS DRAWING MAY NOT BE COPIED OR REPRODUCED IN ANY WAY, AND MAY NOT BE PASSED ON TO A THIRD PARTY, WITHOUT WRITTEN PERMISSION. OWNERSHIP AND COPYRIGHT OF CONEC GmbH DO NOT ALTER CAD DRAWING BY HAND

rev.	description	date	name
2 x b	Ä3966	13.04.2011	K.H.
a	Original		

tolerance		
$\text{H}$	$\text{h}$	dim. in mm
2010	date	name
drawn	12.10.	Henneboel
appd.	13.10.	Koch
norm	DIN EN 60603-2	
d-old		

scale:	2:1
material:	SEE NOTES
title:	FEMALE CONNECTOR TYPE "D" 32pos. with screw termination
dwg no:	12K1A700
part no:	122B13029X

DIN-A  
3  
sh: 1/1