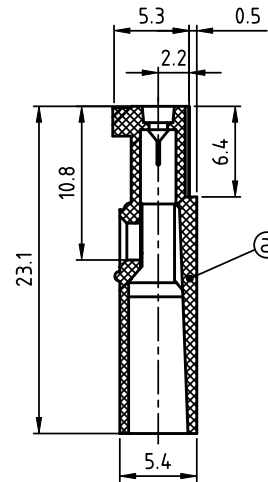
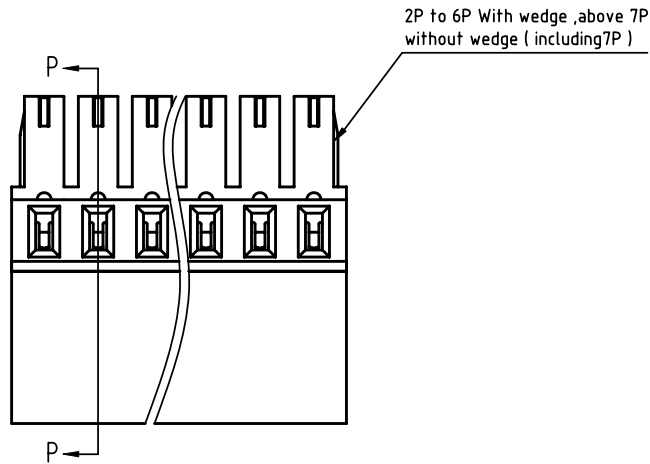
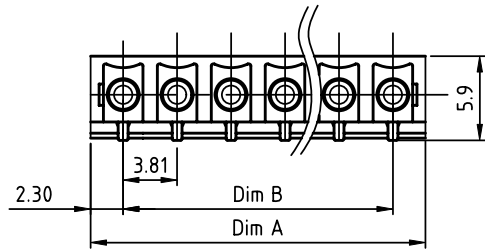


PRODUCT NUMBER	PITCH
Klxx30x000J0G	3.81 mm



Section P-P

Material:

- Item@Terminal housing:Thermoplastic (UL94 V-0)

Electrical

- Voltage rating: 160V
- Current rating: 8A
- Wire range: 1.0-1.2mm²
- Withstanding Voltage: 1.32KV
- Corresponding female crimp contacts:A0 3.81 series

PART NO.: KI xx 30 x 0 00J0 G

N=number of poles

Dim A=(N-1)x3.81+4.60
Dim B=(N-1)x3.81

Poles	2P~6P	7P~12P	13P~18P	19P~24P
Dim A	±0.20	±0.25	±0.30	±0.35
Dim B	±0.15	±0.20	±0.25	±0.30

Solid block	Color	RoHS compliant (lead<4%) In copper Alloy
No. of poles		
02 2 poles	0 Black (RAL9005)	
03 3 poles	2 Red (RAL3001/D)	
...	3 Orange(RAL2011/P)	
...	4 Yellow(RAL1018/A)	
24 24 poles	5 Green(RAL6018/T)	
	6 Blue (RAL5015/A)	
	8 Grey(RAL7035/D)	
	9 White(RAL1102)	
	C Green(RAL6018/U)	

mat'l. code		surface ASME Y14.5	tolerance ASME Y14.5	projection	product family TERMINAL BLOCK
ltr	ecn no	dr	date	 MM	title TERMINAL BLOCK
tolerances unless otherwise specified					
angles		X.±0.5		 scale	PLUGGABLE PLUG,CRIMP CONNECTION PLUGGABLE PLUG,CRIMP CONNECTION PLUGGABLE PLUG,CRIMP CONNECTION
X*±1°		X.XX±0.3			
dr		EVIN ZHONG	050414		dwg no Klxx30x000J0G sheet 1 of 1 size A4
enr		EVIN ZHONG	050414		
chr		HANKE FENG	050414		
appd		SHI JUN	050414		
sheet index	revision sheet	A	1	type CUSTOMER Drawing	