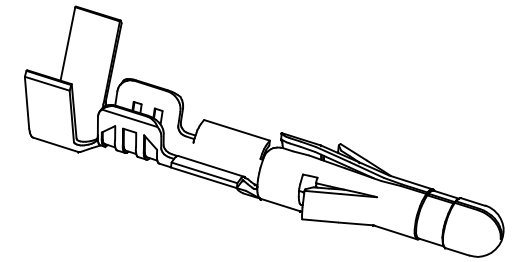
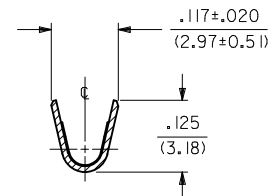
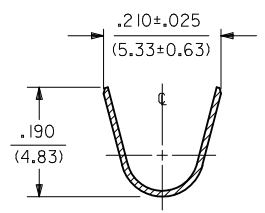
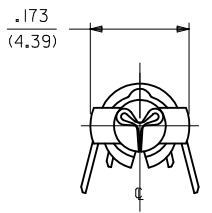


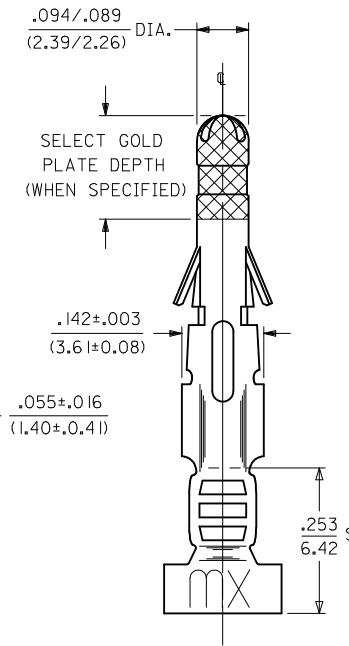
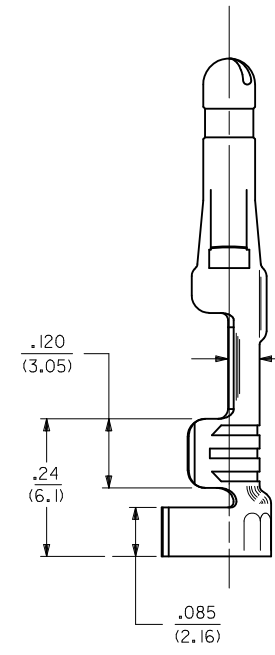
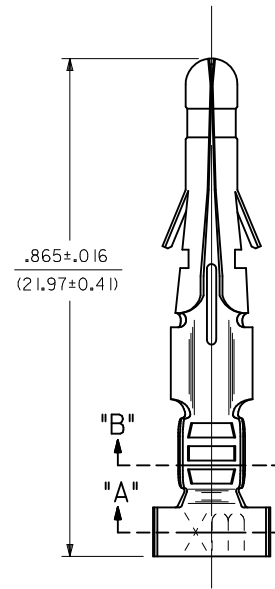
PART NO.	ENG. NO.	INTERLEAF PAPER OPTION
02-09-2103	1190-(P901)L	
02-09-2101	1190-(P901)	
02-09-6110	1190-(591)L	
02-09-6101	1190-(591)	
02-09-6106	1190-(550)L	
02-09-6100	1190-(550)	
02-09-5101	1190-(P901)-I	YES



SECT. "B-B"



SECT. "A-A"



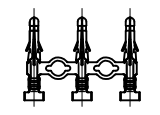
- NOTES:
- MATERIAL:
CARTRIDGE BRASS
 - FINISH CODES:
901 HOT TIN DIP .000020/(0.00051) MIN.
591 SELECT GOLD PLATE .000050/(0.00127) MIN. IN CONTACT AREA,
OVER .000050/(0.00127) MIN. NICKEL OVERALL
WITH .000010/(0.00025) MAX. GOLD FLASH OVERALL.
550 SELECT GOLD PLATE .000015/(0.00038) MIN. IN CONTACT AREA,
OVER .000030/(0.00076) MIN. NICKEL OVERALL
WITH .000010/(0.00025) MAX. GOLD FLASH OVERALL.
 - PRODUCT SPECIFICATION: PS-43660-9999
 - PACKAGING SPECIFICATION: PK-1190-001
 - INSERTION FORCE: 5.0 LBS. MAX. WHEN TERMINAL IS INSERTED INTO .093 SERIES HOUSING.
 - RETENTION: 20 LBS. MIN. FROM HOUSING.
 - DIMENSION FROM THE END OF THE TERMINAL TO THE END OF THE BRUSH ON THE WIRE CRIMPED INTO THE TERMINAL.
 - TERMINAL FOR USE WITH .093/(2.36) SERIES HOUSINGS AND WILL ACCEPT 14 THRU 20 AWG WIRE.

LEGEND

1190-(****)*--*

↑ INTERLEAF PAPER OPTION
 ↑ FORM
 ↑ BLANK=CHAIN
 ↑ L=LOOSE
 ↑ FINISH CODE
 ↑ P=PREPLATE
 ↑ BLANK=POSTPLATE

BLANK: INTERLEAF PAPER ON FIRST FEW WRAPS ONLY.
 I: INTERLEAF PAPER THROUGH OUT REEL.



CHAIN FORM FULL SCALE

ADD P/N 02-09-5101 EC NO: UCP2012-2714 DRW: AELHAG CHKD: JBELL APPR: FSMITH	2012/02/20 2012/02/22 2012/04/25	QUALITY SYMBOLS	GENERAL TOLERANCES (UNLESS SPECIFIED)	DIMENSION STYLE	SCALE	DESIGN UNITS	THIRD ANGLE PROJECTION															
		$\nabla=0$ $\nabla=0$	<table border="1"> <thead> <tr> <th></th> <th>mm</th> <th>INCH</th> </tr> </thead> <tbody> <tr> <td>4 PLACES</td> <td>± .---</td> <td>± .---</td> </tr> <tr> <td>3 PLACES</td> <td>± .---</td> <td>± .010</td> </tr> <tr> <td>2 PLACES</td> <td>± 0.25</td> <td>± .014</td> </tr> <tr> <td>1 PLACE</td> <td>± 0.36</td> <td>± .---</td> </tr> </tbody> </table>		mm	INCH	4 PLACES	± .---	± .---	3 PLACES	± .---	± .010	2 PLACES	± 0.25	± .014	1 PLACE	± 0.36	± .---	IN/MM	6:1	INCH	
			mm	INCH																		
		4 PLACES	± .---	± .---																		
3 PLACES	± .---	± .010																				
2 PLACES	± 0.25	± .014																				
1 PLACE	± 0.36	± .---																				
DESCRIPTION	DRAWN BY: AELHAG CHECKED BY: JBELL APPROVED BY: FSMITH	DATE	DATE	DATE	TITLE CRIMP TERMINAL, MALE .093/(2.36) DIA. FOR 14 THRU 20 AWG. WIRE																	
REV	BSS	MATERIAL NO. SEE CHART	DATE 2010/06/29	DATE 2010/06/29	DOCUMENT NO. SD-1190-*	SHEET NO. 1 OF 1	THIS DRAWING CONTAINS INFORMATION THAT IS PROPRIETARY TO MOLEX INCORPORATED AND SHOULD NOT BE USED WITHOUT WRITTEN PERMISSION															